

# Catchbox Beltpack Module



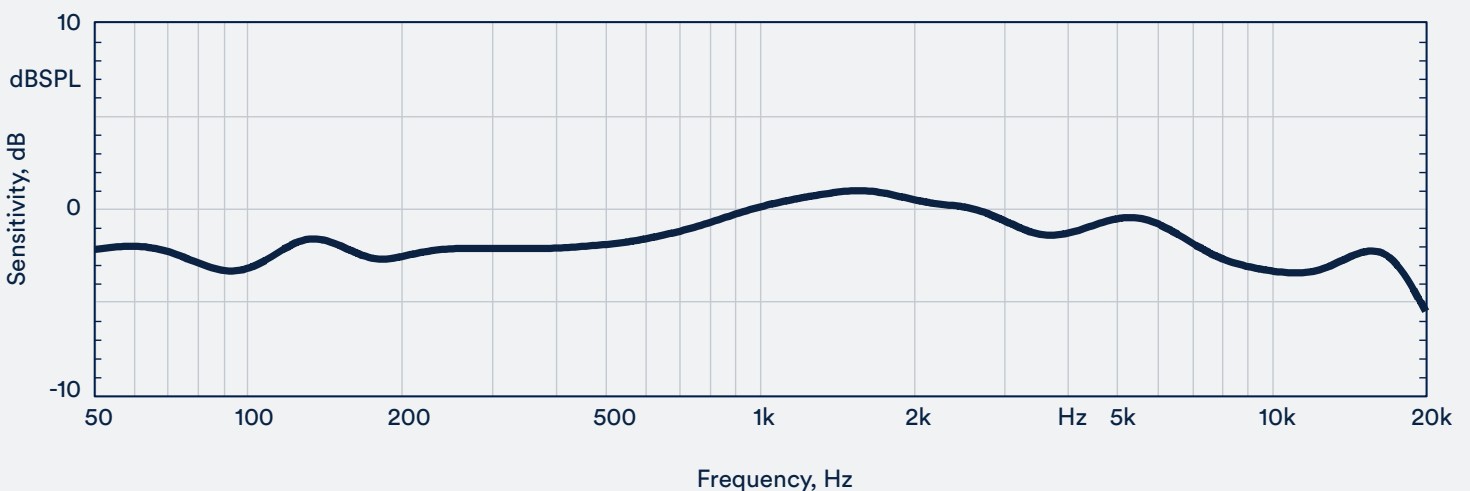
## Technical Specifications

The Catchbox Beltpack Module transforms a wireless beltpack transmitter into a throwable microphone for engaging audiences at large, supervised and managed events. It features an integrated, focused omni-directional™ microphone element and is equipped with Automute™ technology, which automatically mutes the Module when in motion. Adapter cables ensure compatibility with transmitters from various wireless microphone brands.

### General specifications

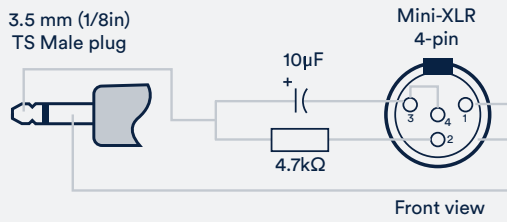
<b>Weight (with Cover, without wireless transmitter)</b>	335 g / 11.82 oz
<b>Dimensions (with Cover)</b>	180 x 180 x 180 mm / 7 x 7 x 7 in
<b>Built-in Automute™ technology</b>	Yes
<b>Working range</b>	Depends on the wireless system used
<b>Battery type</b>	1 x AA (LR6)
<b>Battery life</b>	>20 hours (with alkaline battery)
<b>Microphone element</b>	4 Electret condenser, Focused omni-directional™
<b>Additional audio latency</b>	0 ms
<b>Audio frequency response</b>	50 to 20 000 Hz
<b>Operating temperature range</b>	0 °C (32 °F) to 30 °C (86 °F)
<b>Storage temperature range</b>	0 °C (32 °F) to 50 °C (122 °F)
<b>Wireless charger compatible</b>	No

### Audio frequency response



Frequency response is measured with attached foam cap

## Adapter cables included



3.5 mm to 4-pin mini XLR adapter cable

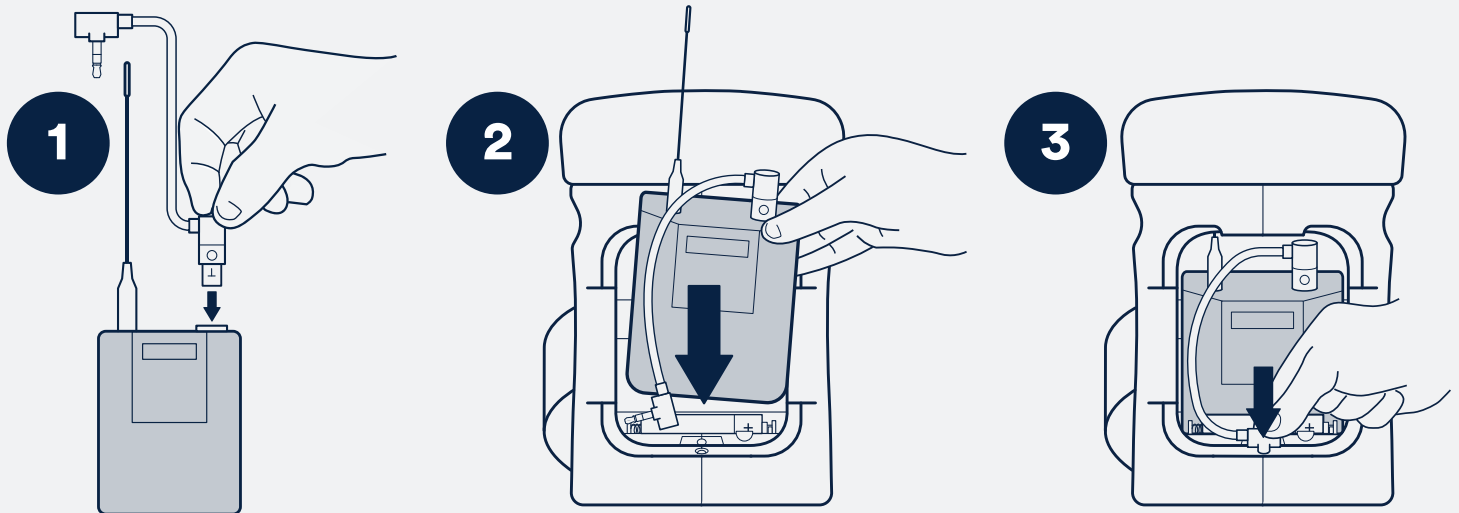


3.5 mm to 3.5 mm plug adapter cable



Cables for other brand transmitters available for purchase. See full compatibility list on [our website](#)

## Quick start guide



**1. Plug the compatible adapter cable into the third-party transmitter**

**2. Plug the adapter cable into the Catchbox Beltpack Module and make sure that the transmitter is securely fitted in the cavity**

Cavity dimensions - 87 x 68 x 27 mm / 3.4 x 2.7 x 1.06 in.